

msb Tamachi

Shops & Restaurants Floor Guide

English


msb Tamachi



[Yakitori Chicken Skewers]

S1 HONKE-ABEYA

We use Hina chickens delivered via the shortest possible route from the producers. Expert chefs grill the chicken over Binchotan charcoal using the optimal cooking methods each day.

☺ Lunch 11:30-15:00 (L.O.14:30)
Dinner 15:00-22:00 (L.O.for Food 21:00/Drinks 21:30)
☎ 03-6809-3290 ☑ Yes ☒ No
☺ 67 seats (semi-private room available)



[Japanese Cuisine]

S2 msb Tamachi uokin

Japanese-style pub featuring seafood dishes using ingredients freshly delivered from the market every morning. Our specialty dish is our assortment of sashimi.

☺ Lunch 11:30-15:00 (L.O. 14:30)
Dinner 17:00-23:00 (L.O.22:00)
☎ 03-6271-9620 ☑ 114 seats (no private rooms)
☑ Yes ☒ No



[Supermarket]

S3 LIFE

Greets customers with outstanding service and a wide range of products including fresh produce, daily dishes, prepackaged foods, and daily necessities.

☺ Weekdays 8:00-24:00
Sat., Sun., & Holidays 9:30-24:00
☎ 03-3453-3811 ☑ Eat-in 30 seats



[Standing Sushi Bar]

S4 SUSHI UOGASHI NIHON-ICHI

We carefully select and order directly from the Toyosu market to ensure the freshness of our sushi. We hope you enjoy its genuine flavor.

☺ Weekdays 11:00-23:00 (L.O.22:40)
Sat., Sun., & Holidays 11:00-22:00 (L.O.21:40)
☎ 03-6809-6428 ☑ 14 seats (6 to 7-seat private room)
☑ Yes ☒ No

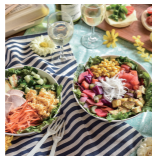


[Salad Restaurant]

S5 With Green

Each salad bowl is filled with fresh produce that will satisfy your body and heart. Enjoy a convenient and healthy meal.

☺ Weekdays 10:00-22:00
Sat., Sun., & Holidays 11:00-21:00
☎ 03-6275-1831 ☑ 23 seats (no private rooms)
☑ Yes ☒ No

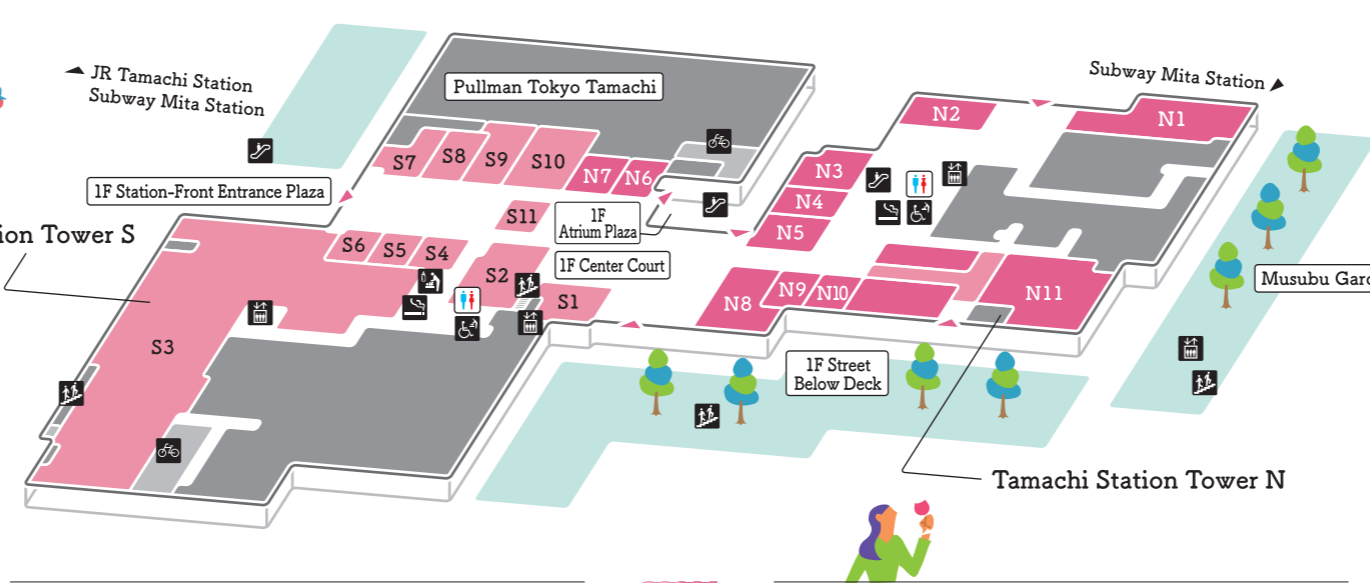


[Bakery & Café]

S6 & COFFEE MAISON KAYSER

Enjoy our freshly-baked croissants with the aroma of cultured butter, along with freshly brewed coffee.

☺ 10:00-21:00 (L.O.20:30)
☎ 03-6435-3844 ☑ 21 seats (no private rooms)
☑ Yes ☒ No



[Korean Home-Style Cuisine]

S7 Bokuden Shibaura

With ingredients stocked directly from the Korean market, enjoy chijimi, gejang, and sundubu-jjigae made carefully by hand every day, along with kimchi made in-house.

☺ Weekdays 11:30-15:00, 17:00-23:00 (L.O.22:00)
Sat., Sun., & Holidays 11:30-15:00, 17:00-22:00 (L.O.21:00)
☎ 03-6271-9566 ☑ 40 seats (no private rooms)
☑ Yes ☒ No



[Wonton Noodle Dining]

S8 Kosyuichiba

We offer fresh and handmade wonton by making the skins, kneading and folding them. Plus, they come with noodles with a rich texture and a broth full of delicious ingredients.

☺ 11:00-23:30 (L.O.23:00)
☎ 03-6453-6047
☑ 56 seats (9 at the counter, 28 for tables, 5 at the stall and 14 for outside seating)
☑ Yes ☒ No



[Craft Beer & Modern German Cuisine]

S9 SCHMATZ Beer Dining

Enjoy beer and casual dining at a restaurant that serves nouvelle German cuisine together with domestically brewed craft German beer.

☺ Lunch 11:30-15:00 (L.O.14:30)
Dinner 17:00-23:00 (L.O. for Food 22:00/Drinks 22:30)
☎ 03-6271-9631 ☑ 85 seats (no private rooms)
☑ Yes ☒ Yes



[Traditional Japanese-style Pub]

S10 TAISYUSAKABA BEETLE

A traditional style casual pub where you can enjoy solo dining. The pub offers a reasonably priced selection of popular homemade dishes and drinks.

☺ Weekdays 11:00-15:00 (L.O.14:30), 16:00-23:30 (L.O.23:00)
Sat., Sun., & Holidays 11:00-23:30 (L.O.23:00)
☎ 03-6809-6514 ☑ 122 seats (no private rooms)
☑ Yes ☒ No



[Japanese Bar]

S11 Tenshi no Highball

Savor the earthy aroma and rich flavor of Shochu distilled liquor. Enjoy the Shochu together with our unique dishes of basashi (horse sashimi) and horse meat curry.

☺ Lunch 11:30-15:00 (L.O.14:30)
Dinner 15:00-22:00 (L.O.for Food 21:00/Drinks 21:30)
☎ 03-6809-5680 ☑ 17 seats (no private rooms)
☑ Yes ☒ No



[Restaurant & Café]

N1 MUSASHI NO MORI Diner

Offers an extensive menu of dishes that can be enjoyed by you and your friends and family. Delicious meals and comfort are waiting here for you throughout the day.

☺ Weekdays 9:00-22:30 (L.O.21:30)
Sat., Sun., & Holidays 8:00-22:30 (L.O.21:30)
☎ 03-5427-7733 ☑ 100 seats (no private rooms)
☑ Yes ☒ No



[Eel]

N2 UNAGI YONDAI-ME KIKUKAWA msb Tamachi Location

Operated by an eel wholesaler that's been in business for 90 years, this restaurant cuts and cooks each eel right in front of the customer, providing a high level of sincere and personal service.

☺ Lunch 11:00-15:00 (L.O.14:00)
Dinner 17:00-22:00 (L.O.21:00)
☎ 03-6435-1128 ☑ Yes ☒ No
☑ 47 seats (1 private room with a maximum of 18 to 20 seats)



[Uwajima Cooking & Japanese Sake]

N3 Ehime Uwajima KADOYA

Enjoy "Uwajima Taimeshi", the local dish of Ehime Prefecture's Uwajima, together with locally brewed sake and meals prepared with ingredients from Shikoku, Kyushu, and the Sanin region.

☺ Weekdays 11:30-15:00 (L.O.14:00), 17:30-23:00 (L.O.22:00)
Sat., Sun., & Holidays 11:30-15:00 (L.O.14:00), 17:30-22:00 (L.O.21:00)
☎ 03-6809-3078 ☑ No ☒ No
☑ 60 seats (1 private room with 6 seats)



[Hand-made Soba & Locally Brewed Sake]

N4 Kagurazaka KUZURYU

Sit back and enjoy the rustic flavor of hand-made soba prepared from milled Oku-Echizen husked buckwheat, together with the regional cuisine and locally brewed sake which are specialties of Fukui Prefecture.

☺ Lunch 11:00-15:00 (L.O.14:30) ※On Saturday and Sunday
Dinner 17:00-23:00 (L.O.22:00) there is a set menu all day.
☑ 39 seats (5 at the counter, 34 for tables, and private rooms)
☎ 03-3451-1937 ☑ Yes ☒ Yes (Saturday and Sunday only)



[Japanese-style Barbecue]

N5 SENJU IPPO IPPO

Offers "robatayaki" Japanese-style barbecue, which brings out the flavor in seafood, seasonal vegetables, and meat. Enjoy your sake with fresh sashimi and delicious home-style cooking.

☺ Weekdays 11:30-15:00 (L.O.14:00), 17:00-23:00 (L.O.22:00)
Sat., Sun., & Holidays 11:30-15:00 (L.O.14:30), 17:00-22:00 (L.O.21:00)
☎ 03-6722-6130 ☑ 65 seats (no private rooms)
☑ No ☒ Yes



[Meat Bar]

N6 WAGYU Meat Bar ZENIBA

A meat bar operated by a "yakiniku" roasted meat restaurant that purchases a single black wagyu cow to prepare reasonably priced dishes, which can be enjoyed with your drinks.

☺ Weekdays 11:30-15:00 (L.O.14:30), 17:00-23:00 (L.O.22:30)
Sat., Sun., & Holidays 11:30-15:00 (L.O.14:30), 15:00-23:00 (L.O.22:30)
☎ 03-6809-6229 ☑ 50 seats (no private rooms)
☑ Yes ☒ Yes



[Udon Noodles & Chicken on-the-bone]

N7 KOBINCHO

Sanuki udon noodles and Chicken on-the-bone. Enjoy Japan's udon culture and izakaya bar culture.

☺ Lunch 11:30-15:00 (L.O.14:30)
Dinner 17:00-23:00 (L.O.22:00)
☎ 03-6809-4788 ☑ 66 seats (no private rooms)
☑ Yes ☒ Yes



[Beef-tongue Bar]

N8 TANNOSUKE Beef tongue Tavern

Condensing the vast experience and skills of a meat artisan, we present choice beef tongue prepared for lunch meals in the afternoon and for tasty dishes at night to be enjoyed with your sake.

☺ Lunch 11:00-15:00 (L.O.14:30)
Dinner 17:00-23:00 (L.O. for Food 22:00/Drinks 22:30)
☎ 03-5730-2910 ☑ Yes ☒ Yes
☑ 112 seats (private room with two tables)



[Ramen & Tsukemen Noodles]

N9 GYOKU

Enjoy a perfect bowl of homemade noodles in a richly flavored soup, served with plenty of shaved dry bonito.

☺ 11:00-22:00 (L.O.21:30)
☎ 03-6453-7655 ☑ 26 seats (no private rooms)
☑ Yes ☒ No



[Tonkatsu Specialty Restaurant]

N10 TONKATSU X

The first tonkatsu restaurant to use "TOKYO X" premium pork developed by the city of Tokyo. Enjoy a fully matured tonkatsu characterized by light fat.

☺ Weekdays 11:00-15:00 (L.O.14:30), 17:00-22:00 (L.O.21:00)
Sat., Sun., & Holidays 11:30-16:00 (L.O.15:00), 17:00-22:00 (L.O.21:00)
☎ 03-6435-2904 ☑ 10 seats (no private rooms)
☑ Yes ☒ Yes



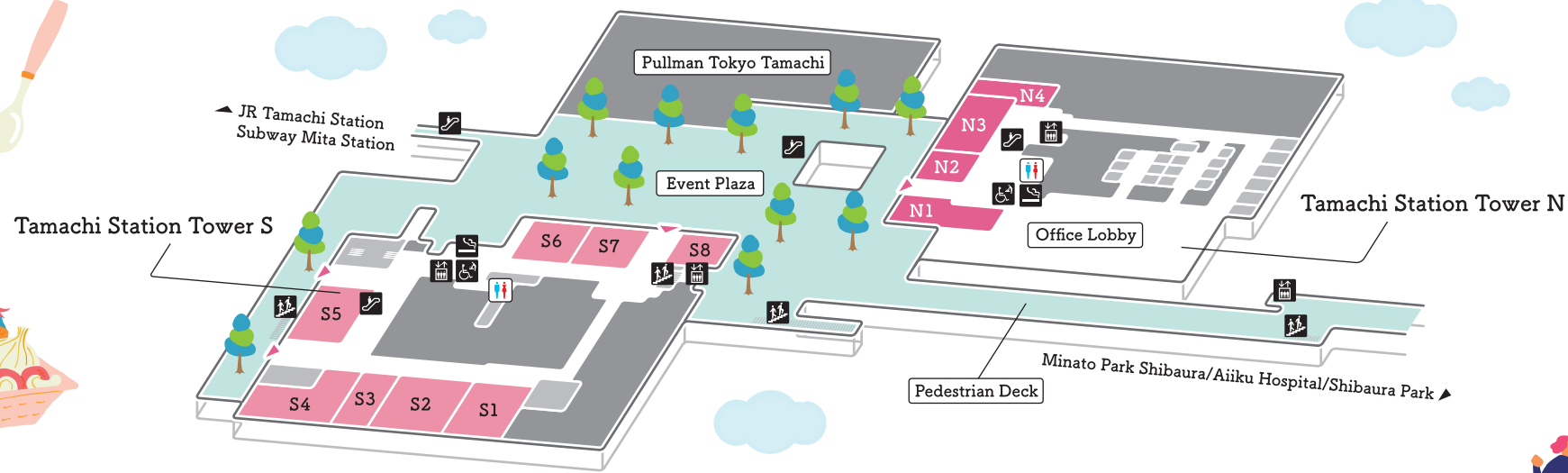
[Showroom / Curry & Café (Takeout)]

N11 MITSUBISHI MOTORS Headquarters Showroom

In this showroom you can view Mitsubishi vehicles at your leisure. Attached is the Delica Curry restaurant where you can enjoy takeout curry with a different roux each day.

☺ 10:00-19:00
☎ 03-6722-6730
☑ Yes ☒ No
Closed on Jan 1st - 3rd every year





[Pharmacy]

S1 matsumotokiyoshi

Focusing on health and beauty products, this pharmacy offers a variety of products specially selected to meet customers' needs.

🕒 10:00-21:00
☎ 03-5439-4177



[Specialty Coffee Shop]

S5 STARBUCKS COFFEE

Offers a variety of drinks prepared from high quality coffee beans, together with a selection of savory sandwiches and pastries.

🕒 7:00-22:00
👤 62 seats (no private rooms)
☎ Yes ☺ Yes



[Café & Bar]

N1 PRONTO

Offers freshly brewed coffee and baked bread in the morning, and perfectly cooked pasta in the afternoon. In the evening, you can enjoy a drink from our bar.

🕒 Weekdays 7:00-17:30 (L.O. 17:30), 17:30-22:00 (L.O. 21:30)
Sat., Sun., & Holidays 10:00-17:30 (L.O. 17:30), 17:30-22:00 (L.O. 21:30)
☎ 03-3457-3366 👤 78 seats (no private rooms)
☎ Yes ☺ No



[Convenience Store]

N3 FAMIMA!!

Offers an assortment of merchandise unavailable at other convenience stores, including FAMIMA!! exclusive products as well as selected stylish stationery and sundry items.

🕒 7:00-23:00
☎ Eat-in 6 seats



[Chinese Cuisine (Creative Chinese Delicacies)]

S2 Shinsouen

Enjoy the inspired Chinese dishes created by our media renowned chef and owner "Secchan" in a luxurious and comfortable space.

🕒 Lunch 11:00-15:00 (L.O. 14:55)
Dinner 17:00-23:00 (L.O. 22:30/Sat., Sun., & Holidays 22:00)
☎ 03-6459-4858 ☎ Yes ☺ No
👤 120 seats (2 private rooms with 20 seats each, 1 room with 14 seats)



[Steak Café]

S6 NICK STOCK

In addition to delicious coffee and sweets, we offer genuine meat dishes. Of course, you can simply enjoy a cup of coffee as well.

🕒 11:00-23:00 (L.O. for Food 22:00/Drinks 22:30)
☎ 03-6435-3200
👤 57 seats (semi-private room with 4 to 8 seats)
☎ Yes ☺ Yes



[Fruit Tea Stand]

N2 MITSUBISHI MOTORS Headquarters Showroom

This Mitsubishi Motors store also offers tea drinks using a fine selection of dried fruits that are good for your body and the environment, as well as sweets.

🕒 10:00-21:00 (L.O. 20:00)
👤 20 seats (no private rooms)/terrace with 10 seats
(Outdoor terrace seating may be closed in the case of bad weather)
☎ No ☺ Yes Closed on Jan 1st - 3rd every year



[Dental Clinic]

N4 Pulcino Dental Office & Orthodontics Tokyo

Based on our theme, "Your dental clinic for every turning point in life," our goal is to be a lifetime clinic for our patients.

🕒 Mon., Tue., Wed., & Fri. 10:00-13:00, 14:30-19:00
Sat., Sun., & Holidays 9:00-12:00, 13:00-17:30
☎ 03-6453-8284
Closed on Thu.



[Japanese Pub]

S3 KOMAHACHI

For 45 years since its founding, KOMAHACHI has remained the popular choice in traditional Japanese style pubs. We look forward to serving you with delicious, handmade dishes and outstanding hospitality.

🕒 11:30-22:00
☎ 03-6435-2858
👤 65 seats (private room with 14 seats)
☎ No ☺ Yes (only for weekend lunch)



[Wine Bar]

S7 The Fish and Oysters

Try our specialty dishes using fresh seafood and seasonal ingredients delivered from the Miura Peninsula every morning. In the afternoon you can simply enjoy our café service.

🕒 Weekdays 11:30-15:00 (L.O. 14:00), 17:00-23:00 (L.O. 22:00)
Sat., Sun., & Holidays 11:30-15:00 (L.O. 14:00), 17:00-22:00 (L.O. 21:00)
☎ 03-6809-6201 👤 80 seats (no private rooms)
☎ Yes ☺ No



[Grilled Barbecue Dining]

S4 YAKINIKU TORAJI

Together with carefully selected meat, we use plenty of seasonal ingredients to prepare meals that "promote health with every bite".

🕒 Lunch 11:00-15:00 (L.O. 14:30)
Dinner 17:00-23:00 (L.O. 22:00)
☎ 03-5439-5129 ☎ Yes ☺ No
👤 82 seats (5 private rooms with 4 seats each, 1 room with 3 seats/8 semi-private rooms with 4 seats each)

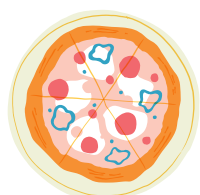


[Casual Italian Cuisine]

S8 KNOCK CUCINA BUONA ITALIANA

Italian cuisine featuring meat on-the-bone and vegetables combined with cheese and delicious ingredients gathered from the mountains. The restaurant also offers a variety of seasonal ingredients that changes on a daily basis.

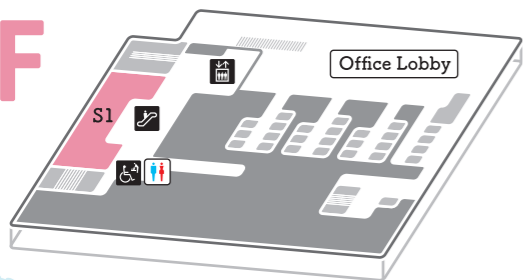
🕒 11:30-22:00 (L.O. 21:00)
☎ 03-3452-8929 ☎ No ☺ Yes
👤 48 seats (private room with 8 seats)/terrace with 40 seats



S

3F

Tamachi Station Tower S

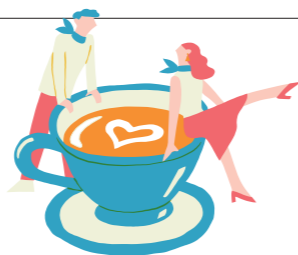


[Convenience Store]

S1 FamilyMart

Offering a wide variety of hot food products including our popular "Fami-Chicky" chicken and genuine coffee. Relax in our eat-in area and enjoy a delicious meal.

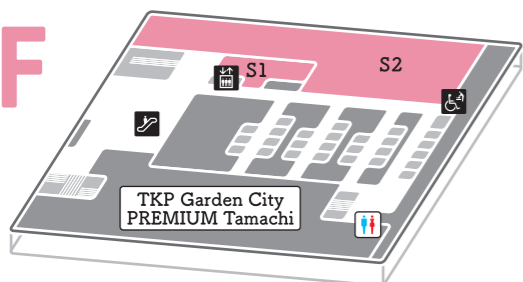
🕒 7:00-23:00
☎️ 03-5439-5432 🍴 Eat-in 22 seats



S

4F

Tamachi Station Tower S



[Specialty Coffee Shop]

S1 STARBUCKS COFFEE

Enjoy our wide variety of drinks prepared from high quality coffee beans together with our selection of pastries and sandwiches.

🕒 9:00-21:00
🍴 46 seats (no private rooms)
☎️ Yes ☺️ Yes



[Books & Stationery]

S2 KUMAZAWA BOOKSTORE

Offers a wide selection of books and stationery. Enjoy a cup of coffee along with a book in our neighboring café.

🕒 9:00-21:00
☎️ 03-5476-0510



[Convenience Store]

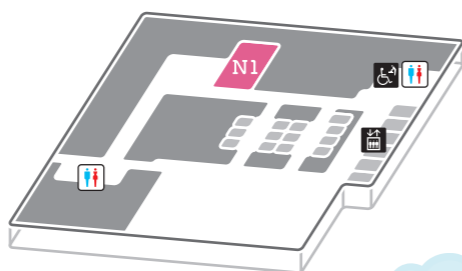
N1 FAMIMA!!

Offers an assortment of merchandise unavailable at other convenience stores, including FAMIMA!! exclusive products as well as selected stylish stationery and sundry items.

🕒 Weekdays 7:00-23:00
Closed on Sat., Sun., & Holidays



Tamachi Station Tower N



N

27F

INDEX

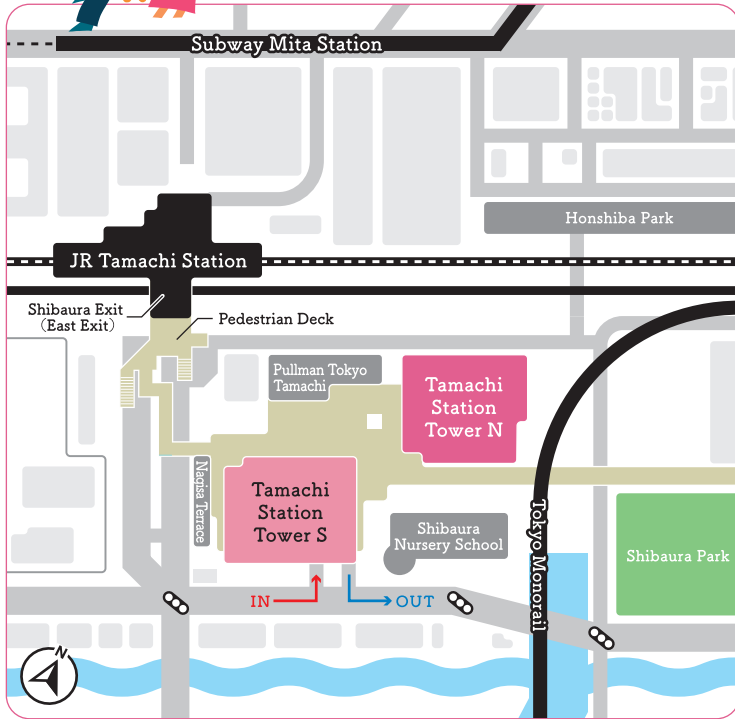
Tamachi Station Tower S

Floor	Store division	Store name	Store categories	Phone Number
1F	S1	HONKE-ABEYA	Yakitori Chicken Skewers	03-6809-3290
	S2	msb Tamachi uokin	Japanese Cuisine	03-6271-9620
	S3	LIFE	Supermarket	03-3453-3811
	S4	SUSHI UOGASHI NIHON-ICHI	Standing Sushi Bar	03-6809-6428
	S5	With Green	Salad Restaurant	03-6275-1831
	S6	& COFFEE MAISON KAYSER	Bakery & Café	03-6435-3844
	S7	Bokuden Shibaura	Korean Home-Style Cuisine	03-6271-9566
	S8	Kosyuichiba	Wonton Noodle Dining	03-6453-6047
	S9	SCHMATZ Beer Dining	Craft Beer & Modern German Cuisine	03-6271-9631
	S10	TAISYUSAKABA BEETLE	Traditional Japanese-style Pub	03-6809-6514
	S11	Tenshi no Highball	Japanese Bar	03-6809-5680
2F	S1	matsumotokiyoshi	Pharmacy	03-5439-4177
	S2	Shinsouen	Chinese Cuisine (Creative Chinese Delicacies)	03-6459-4858
	S3	KOMAHACHI	Japanese Pub	03-6435-2858
	S4	YAKINIKU TORAJI	Grilled Barbecue Dining	03-5439-5129
	S5	STARBUCKS COFFEE	Specialty Coffee Shop	-
	S6	NICK STOCK	Steak Café	03-6435-3200
	S7	The Fish and Oysters	Wine Bar	03-6809-6201
	S8	KNOCK CUCINA BUONA ITALIANA	Casual Italian Cuisine	03-3452-8929
3F	S1	FamilyMart	Convenience Store	03-5439-5432
4F	S1	STARBUCKS COFFEE	Specialty Coffee Shop	-
	S2	KUMAZAWA BOOKSTORE	Books & Stationery	03-5476-0510

Tamachi Station Tower N

Floor	Store division	Store name	Store categories	Phone Number
1F	N1	MUSASHI NO MORI Diner	Restaurant & Café	03-5427-7733
	N2	UNAGI YONDAI-ME KIKUKAWA msb Tamachi	Eel	03-6435-1128
	N3	Ehime Uwajima KADOYA	Uwajima Cooking & Japanese Sake	03-6809-3078
	N4	Kagurazaka KUZURYU	Hand-made Soba & Locally Brewed Sake	03-3451-1937
	N5	SENJU IPPO IPPO	Japanese-style Barbecue	03-6722-6130
	N6	WAGYU Meat Bar ZENIBA	Meat Bar	03-6809-6229
	N7	KOBINCHO	Udon Noodles & Chicken on-the-bone	03-6809-4788
	N8	TANNOSUKE Beef tongue Tavern	Beef-tongue Bar	03-5730-2910
	N9	GYOKU	Ramen & Tsukemen Noodles	03-6453-7655
	N10	TONKATSU X	Tonkatsu Specialty Restaurant	03-6435-2904
	N11	mitsubishi MOTORS Headquarters Showroom	Showroom / Curry & Café (Takeout)	03-6722-6730
2F	N1	PRONTO	Café & Bar	03-3457-3366
	N2	mitsubishi MOTORS Headquarters Showroom	Fruit Tea Stand	-
	N3	FAMIMA!!	Convenience Store	-
	N4	Pulcino Dental Office & Orthodontics Tokyo	Dental Clinic	03-6453-8284
27F	N1	FAMIMA!!	Convenience Store	-

ACCESS



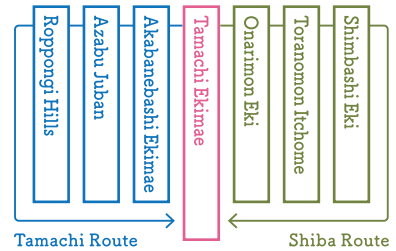
By Train

- ◇ 1-minute walk by Pedestrian Deck directly connecting to the Shibaura Exit (East Exit) of JR Yamanote Line and Keihin Tohoku Line's Tamachi Station
- ◇ 3-minute walk from Toei Asakusa Line and Mita Line's Mita Station

By Bus

- ◇ Metropolitan Bus "Tamachi Eki"
- ◇ Odaiba Rainbow Bus "Tamachi Eki"
- ◇ Walk from Chii-Bus "Tamachi Ekimae"

Chii-Bus (¥100 fare) Tamachi Route/Shiba Route



By Car or Motorcycle / Public Parking Information

- ◇ Hours of Operation : 6:30 to 24:30 ◇ Parking Fee : ¥300 (tax included)/30 min.
- ◇ Max. Fee : Horizontal parking space ¥3,300 (tax included), automated parking space ¥2,400 (tax included)
※Applies only during business hours.
- ◇ Parking Space : 255 vehicles [Breakdown] 48 horizontal parking spaces, 207 automated parking spaces(wheelchair accessible)
- ◇ Height limits : Medium roof 1,550 mm, High roof 2,050 mm ◇ Motorcycles Parking lot : 32

Get the latest information right away! **We're looking for LINE Friends!**

We send out information on events and special deals!



msbTamachi Official LINE



@msb_tamachi



To add us as a Friend : In the LINE app, go to the Home screen and tap the "+" icon in the upper-right to go to the "Add friends" screen. Tap "Search" or "QR code" to find us!

We share a variety of information on activities at msb Tamachi and in the surrounding Tamachi area!



msbTamachi Official Facebook



<https://www.facebook.com/msbTamachi/>

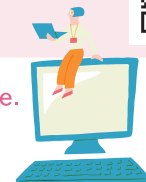


Place to connect(musubu) with this town and everyone.



<https://www.msb-tamachi.net/>

QR Code is a registered trademark of Denso Wave Inc.



Tamachi Station Tower S 3-1- 21 Shibaura, Minato City, Tokyo 108-0023 / Tamachi Station Tower N 3-1- 1 Shibaura, Minato City, Tokyo 108-0023



Hours of operation and other listed information may change without notice. For details, please contact each shop.